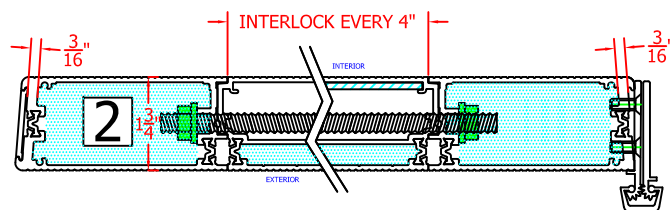
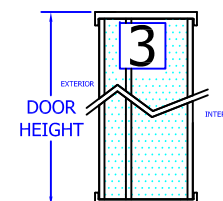
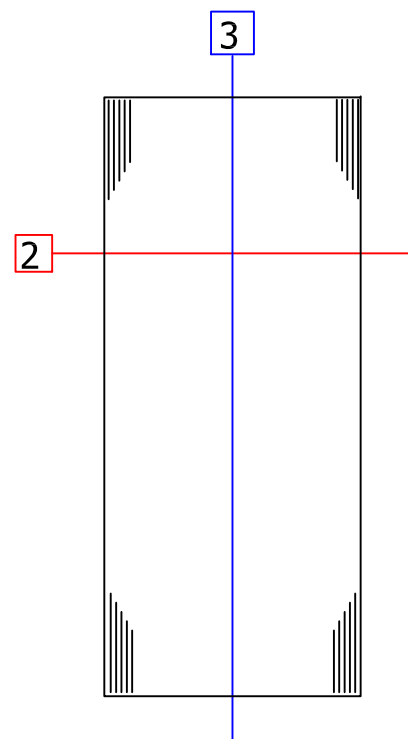
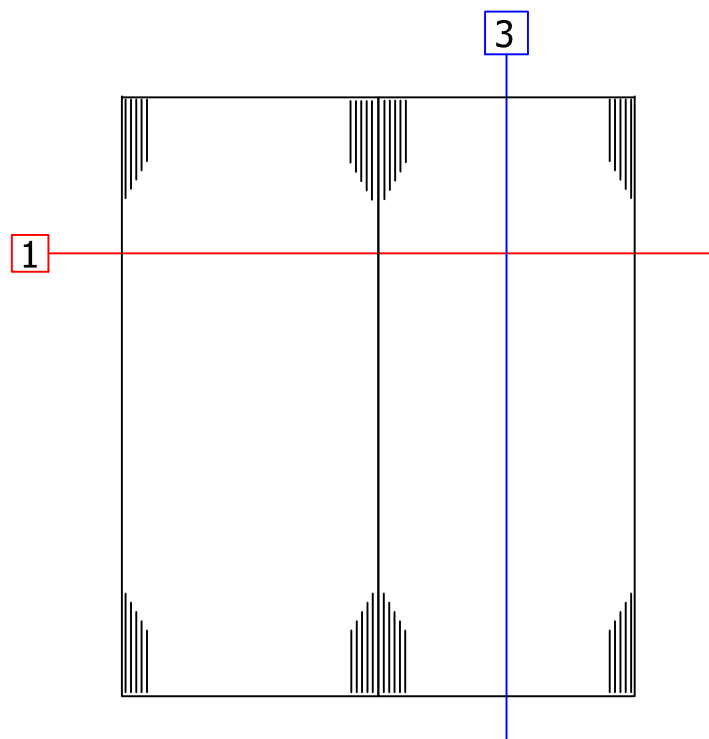
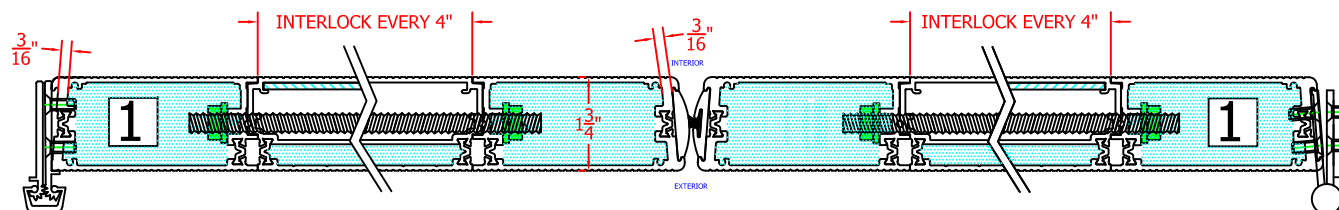


FLT-400-S1

THERMALLY BROKEN AND
INSULATED DOOR SERIES

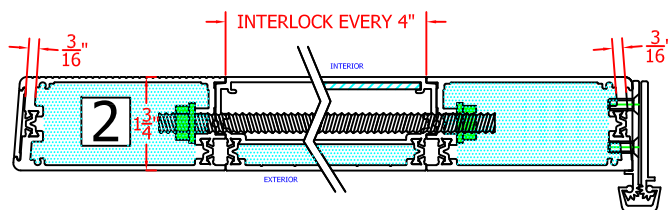
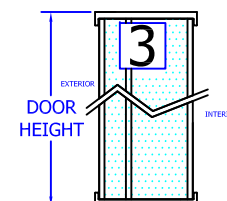
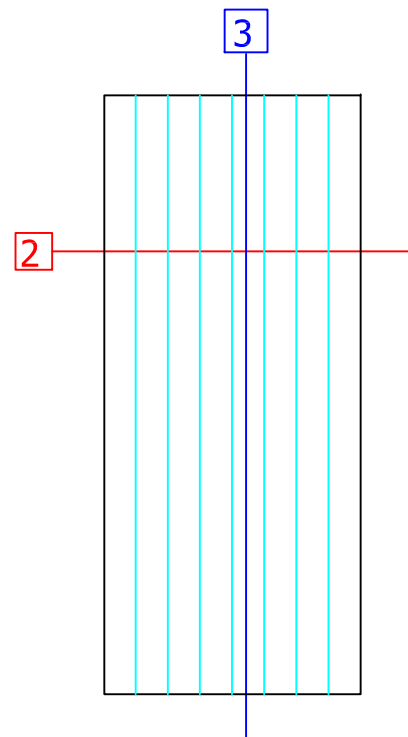
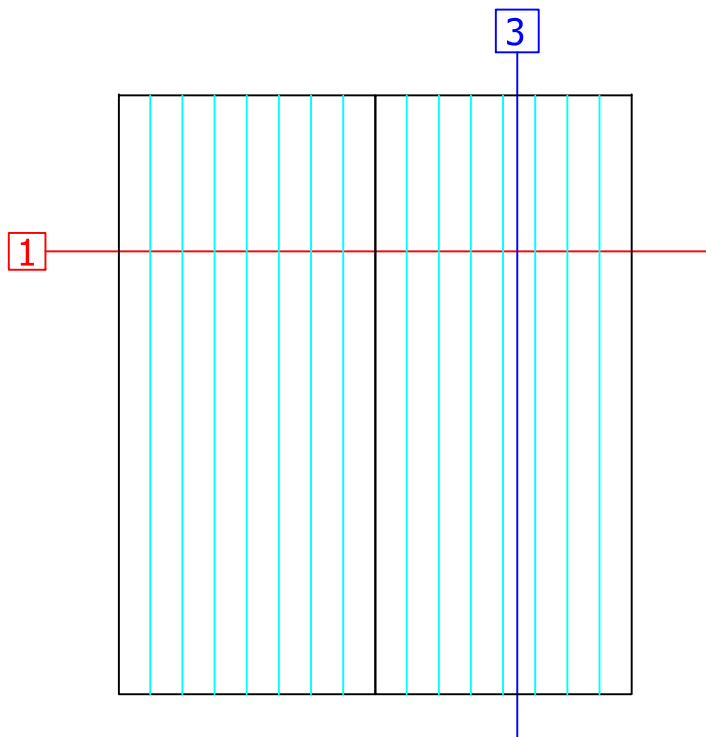


FLUSH DOORS ARE INSULATED WITH POLYISOCYANURATE RIGID FOAM AND DOOR EXTRUSIONS ARE THERMALLY BROKEN WITH POLYAMIDE 66 WITH 25% GLASS FIBERS I-STRUT THERMAL BAR INSERTS.

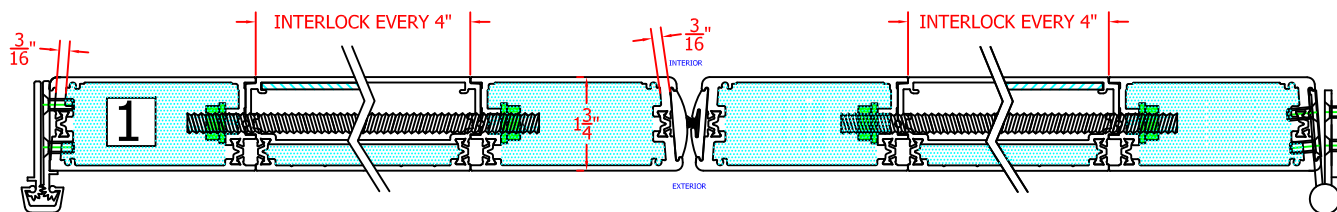


FLT-400-S1

THERMALLY BROKEN AND
INSULATED DOOR SERIES

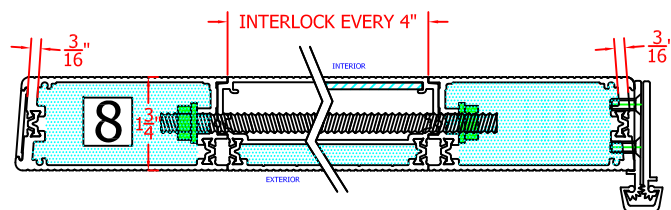
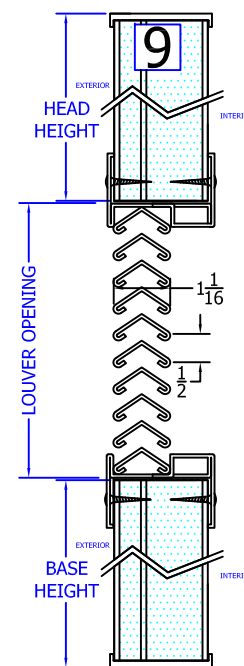
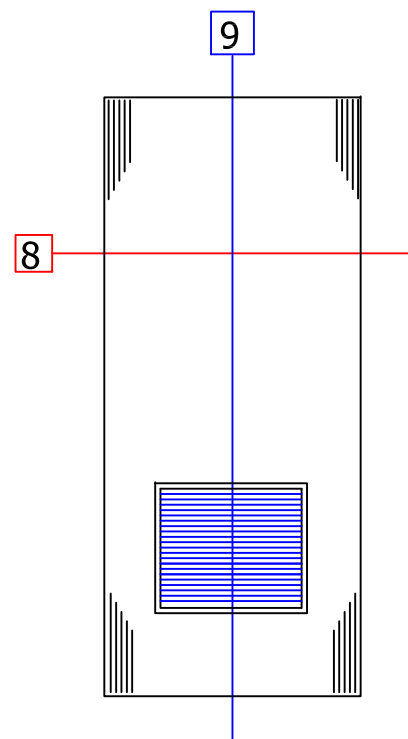
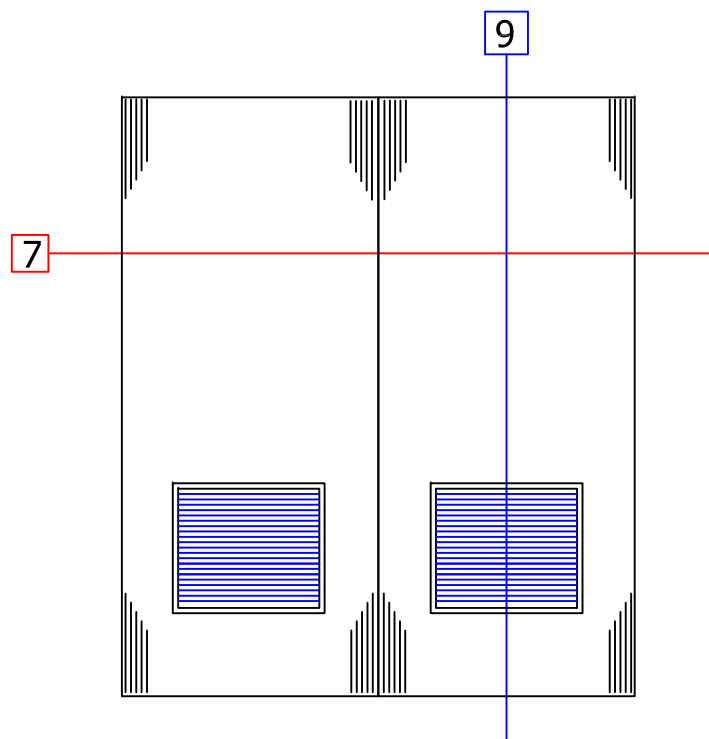


FLUSH DOORS ARE INSULATED WITH POLYISOCYANURATE RIGID FOAM AND DOOR EXTRUSIONS ARE THERMALLY BROKEN WITH POLYAMIDE 66 WITH 25% GLASS FIBERS I-STRUT THERMAL BAR INSERTS.

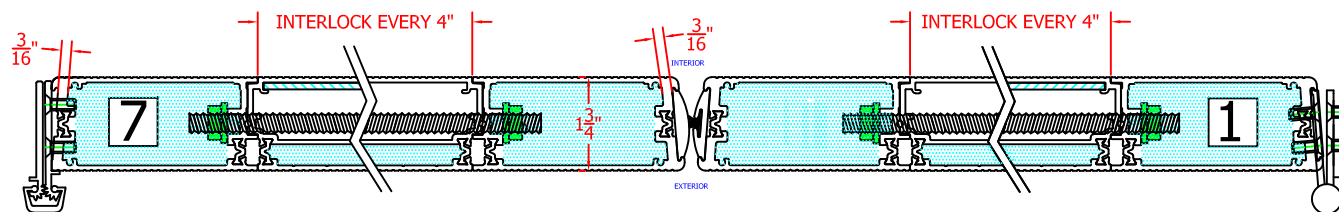


FLT-400-S1-LOUVER

THERMALLY BROKEN AND
INSULATED DOOR SERIES

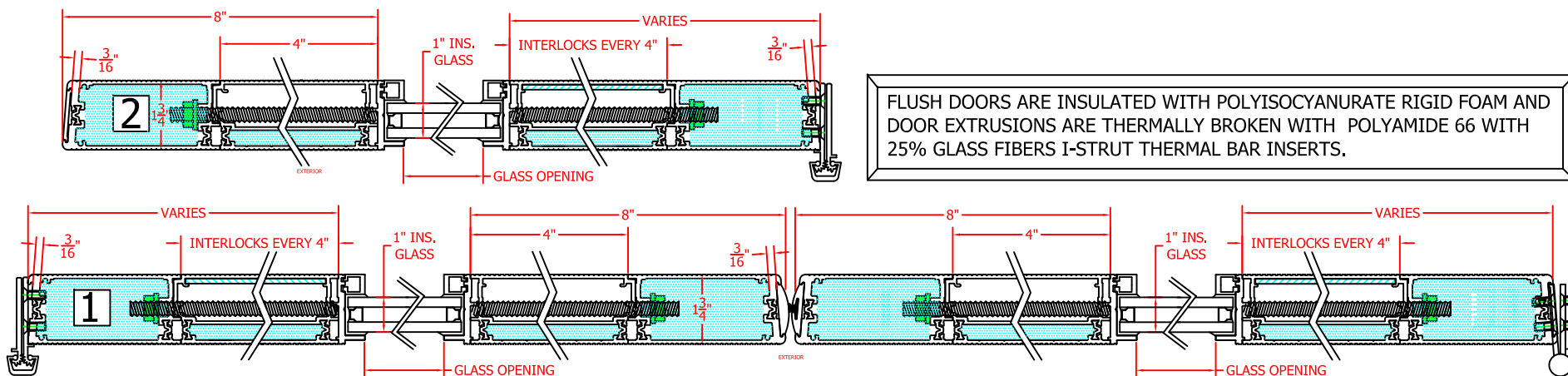
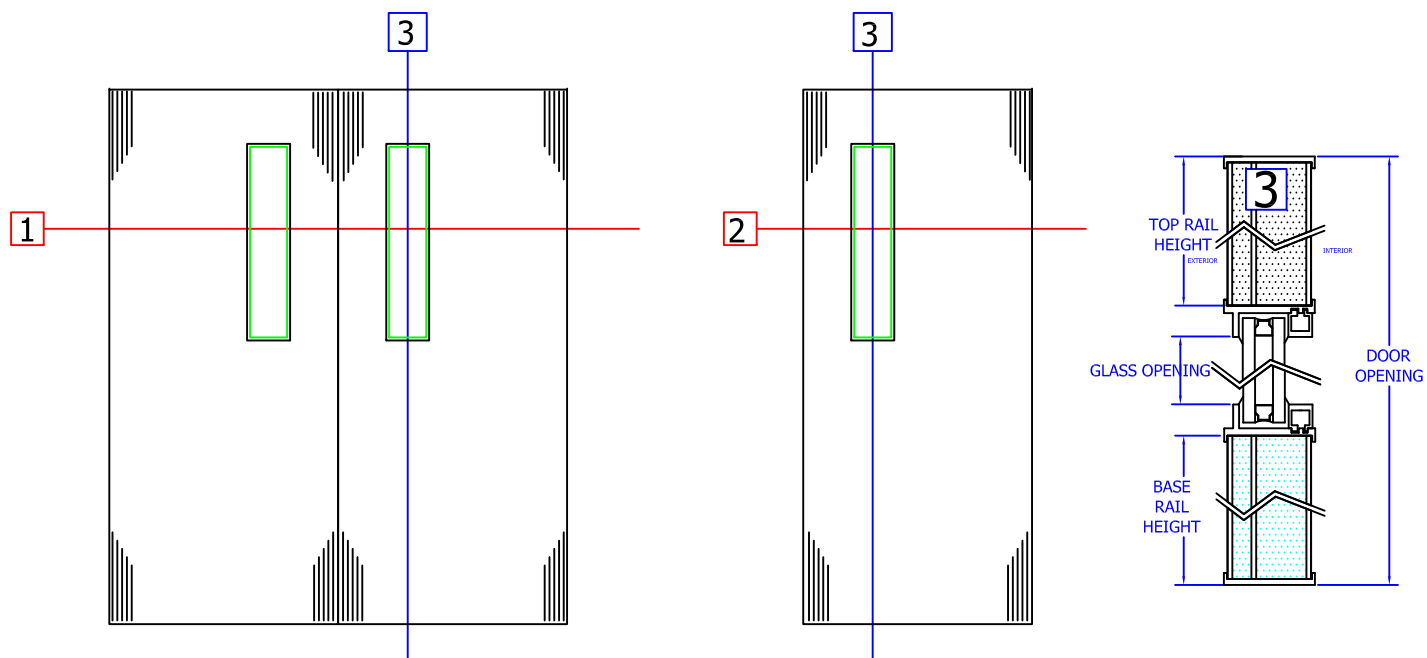


FLUSH DOORS ARE INSULATED WITH POLYISOCYANURATE RIGID FOAM AND DOOR EXTRUSIONS ARE THERMALLY BROKEN WITH POLYAMIDE 66 WITH 25% GLASS FIBERS I-STRUT THERMAL BAR INSERTS.



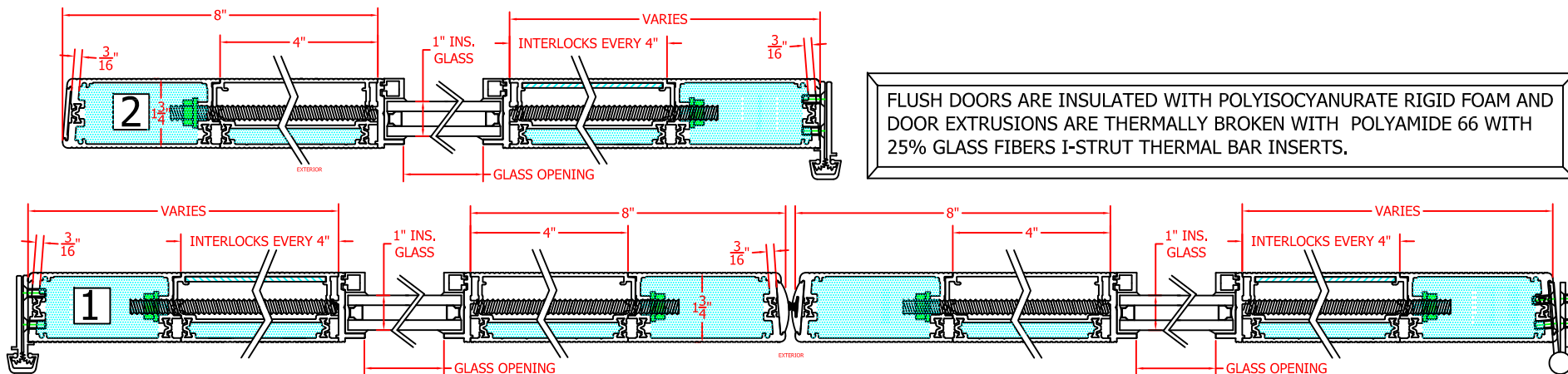
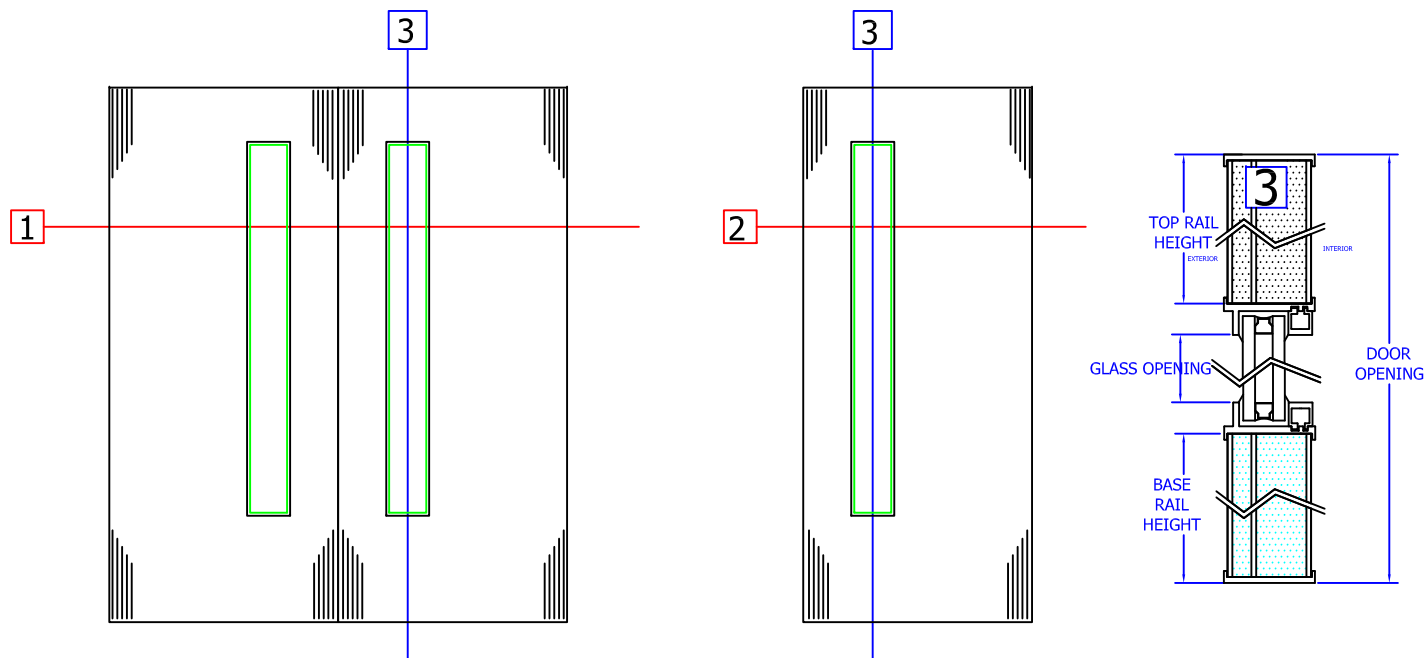
FLT-400-NG

THERMALLY BROKEN AND
INSULATED DOOR SERIES



FLT-400-NG

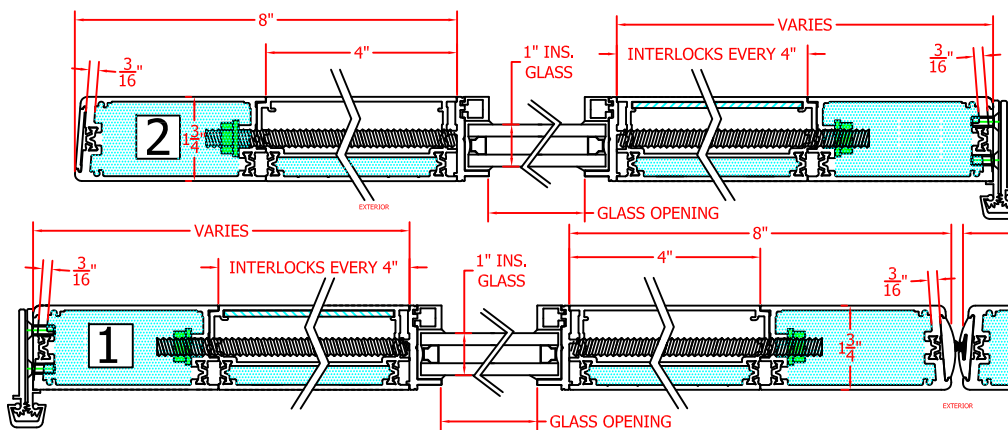
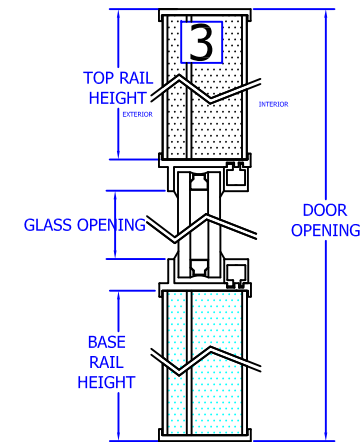
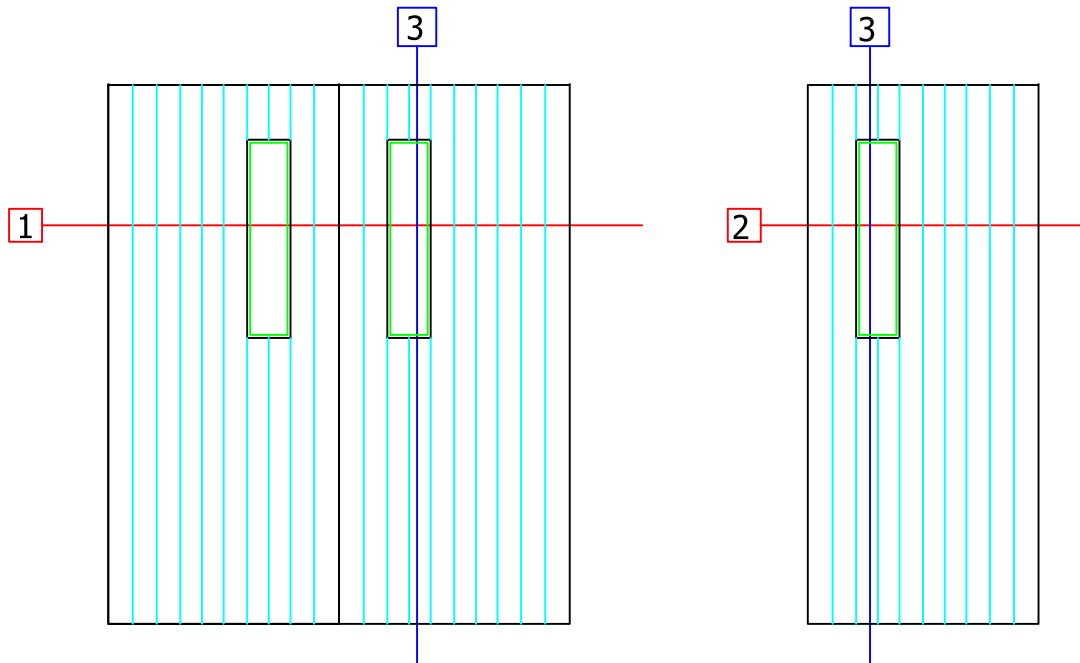
THERMALLY BROKEN AND
INSULATED DOOR SERIES



FLT-400-S-NG

THERMALLY BROKEN AND
INSULATED DOOR SERIES

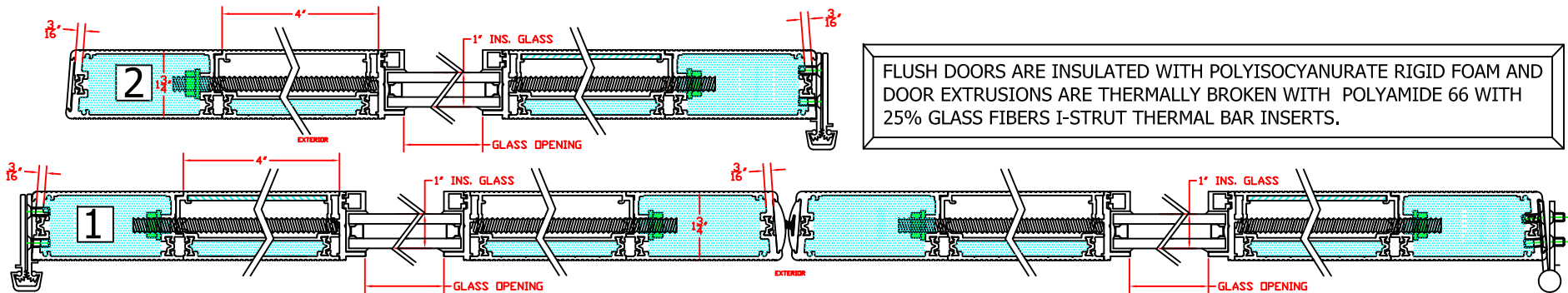
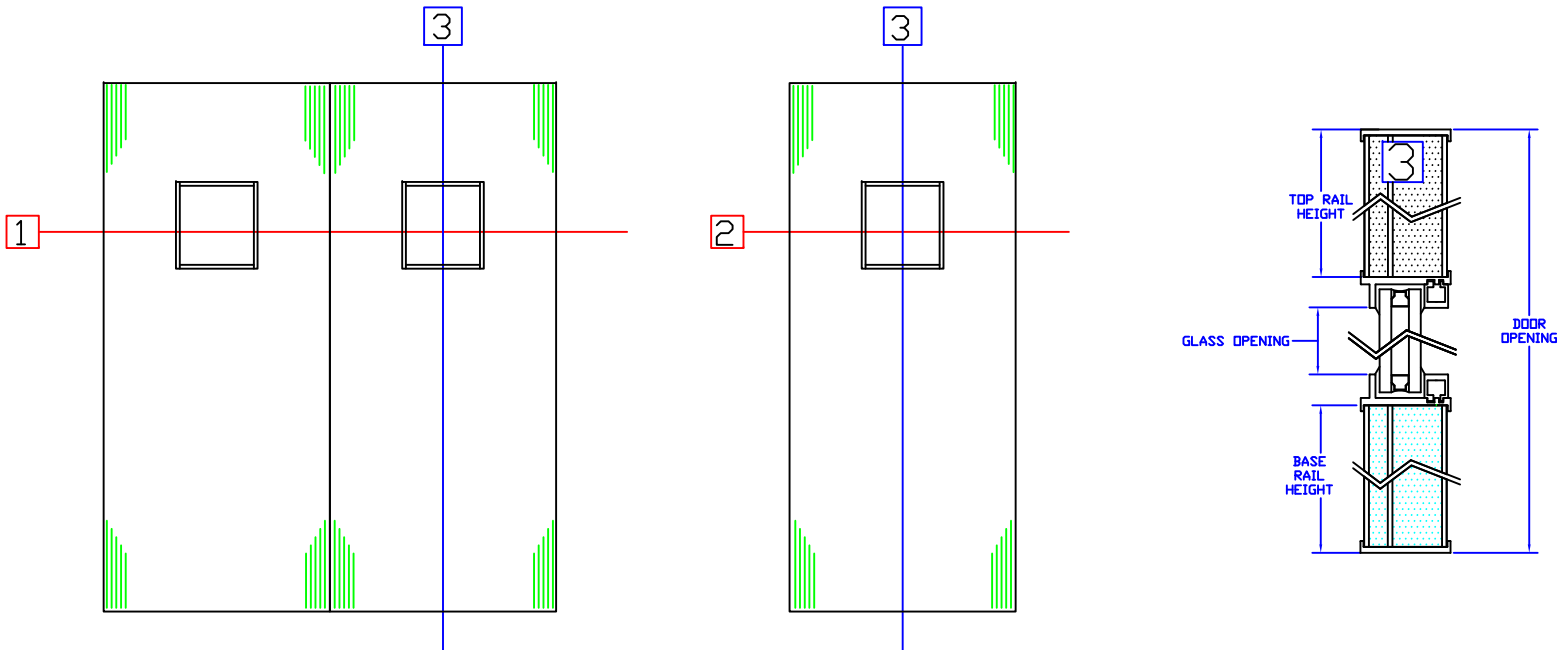
D1



FLUSH DOORS ARE INSULATED WITH POLYISOCYANURATE RIGID FOAM AND DOOR EXTRUSIONS ARE THERMALLY BROKEN WITH POLYAMIDE 66 WITH 25% GLASS FIBERS I-STRUT THERMAL BAR INSERTS.

FLT-400-SG

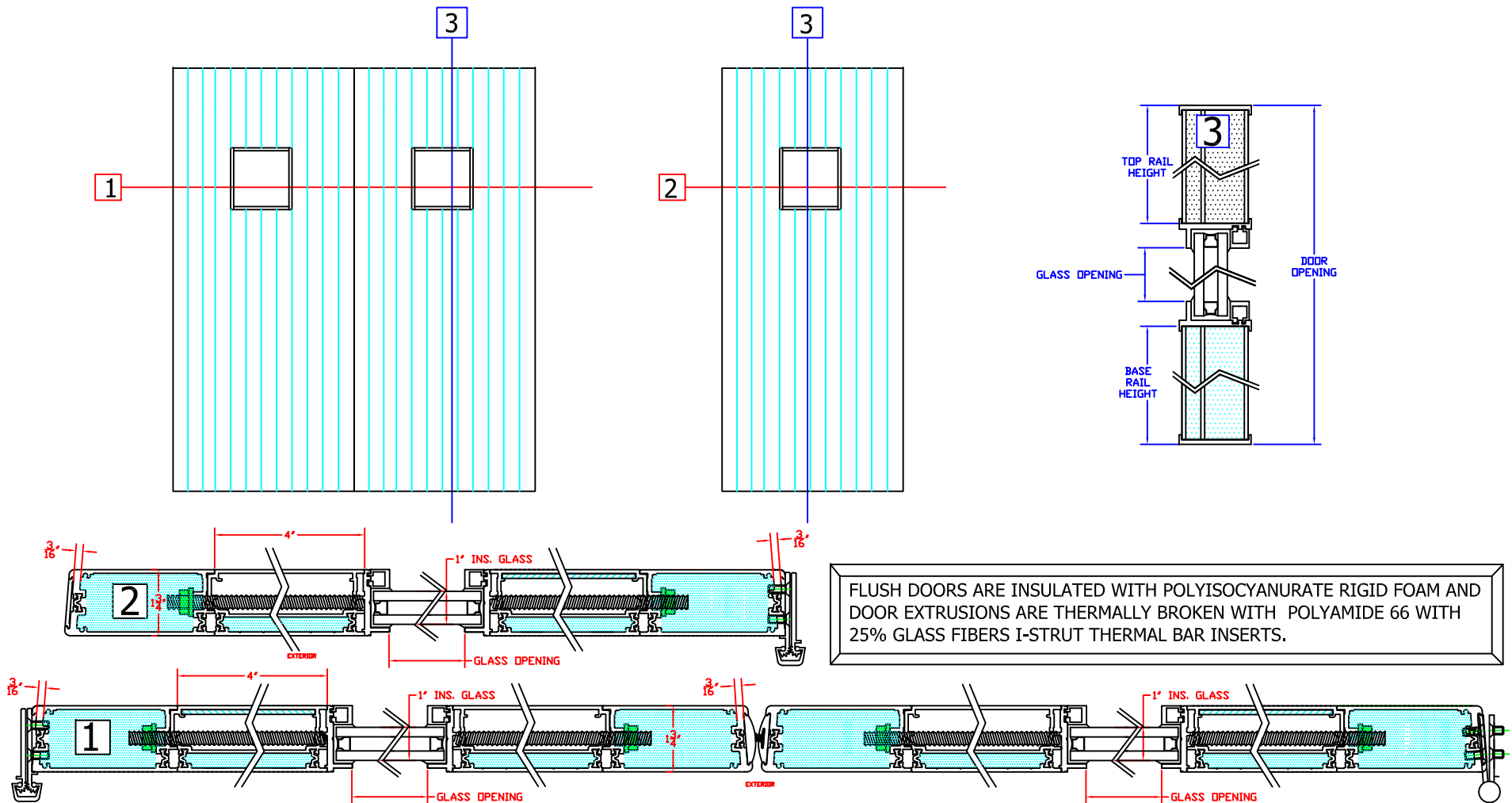
THERMALLY BROKEN AND
INSULATED DOOR SERIES



FLUSH DOORS ARE INSULATED WITH POLYISOCYANURATE RIGID FOAM AND DOOR EXTRUSIONS ARE THERMALLY BROKEN WITH POLYAMIDE 66 WITH 25% GLASS FIBERS I-STRUT THERMAL BAR INSERTS.

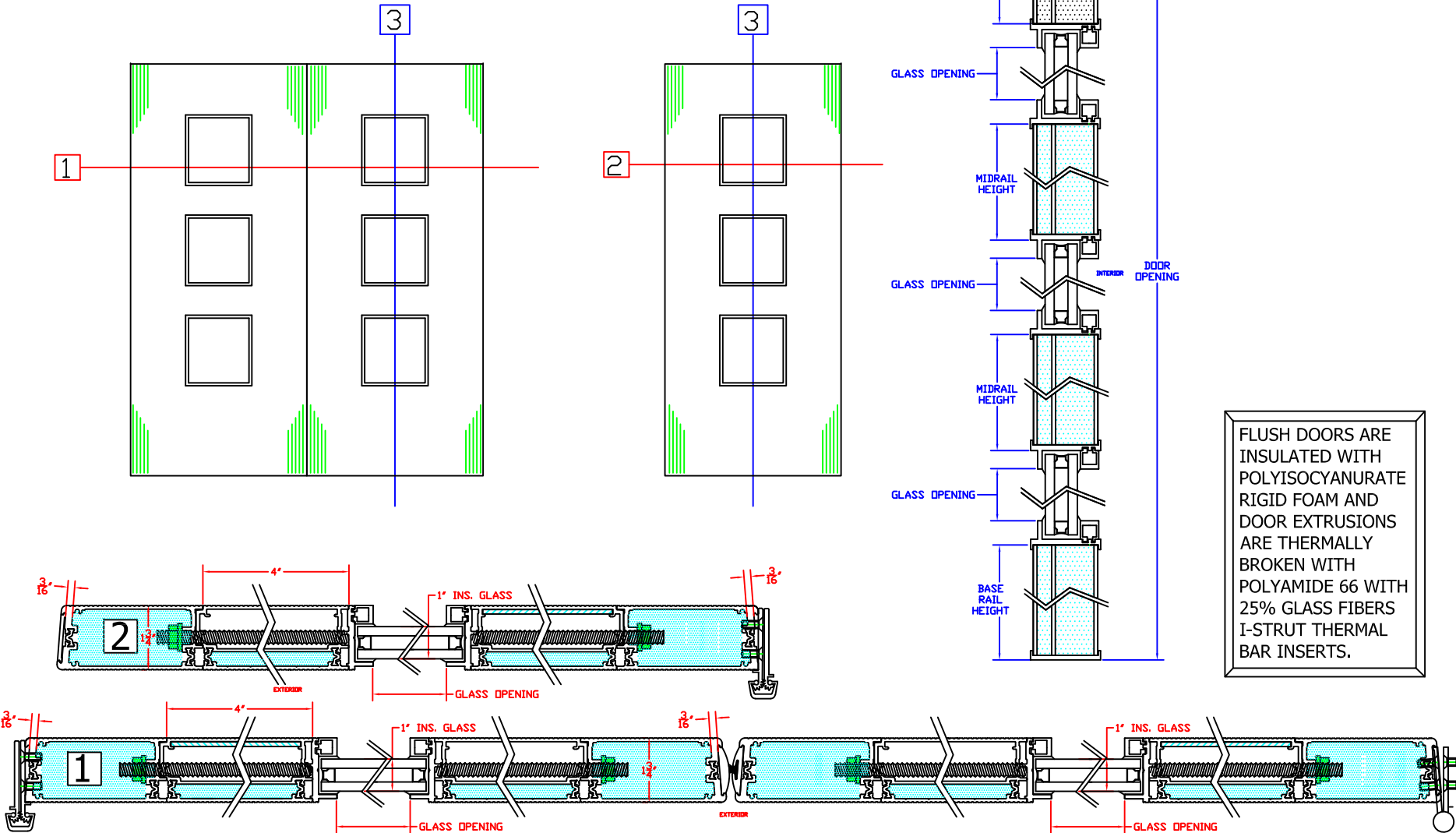
FLT-400-SG

THERMALLY BROKEN AND
INSULATED DOOR SERIES



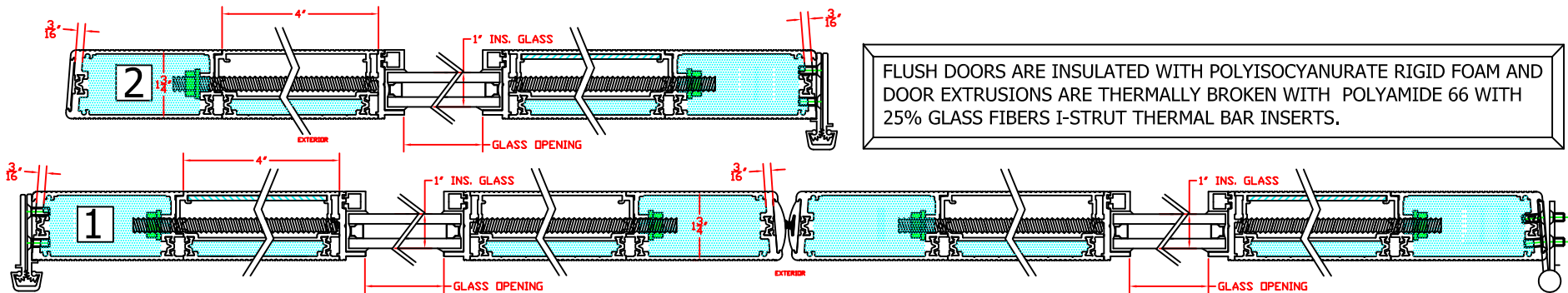
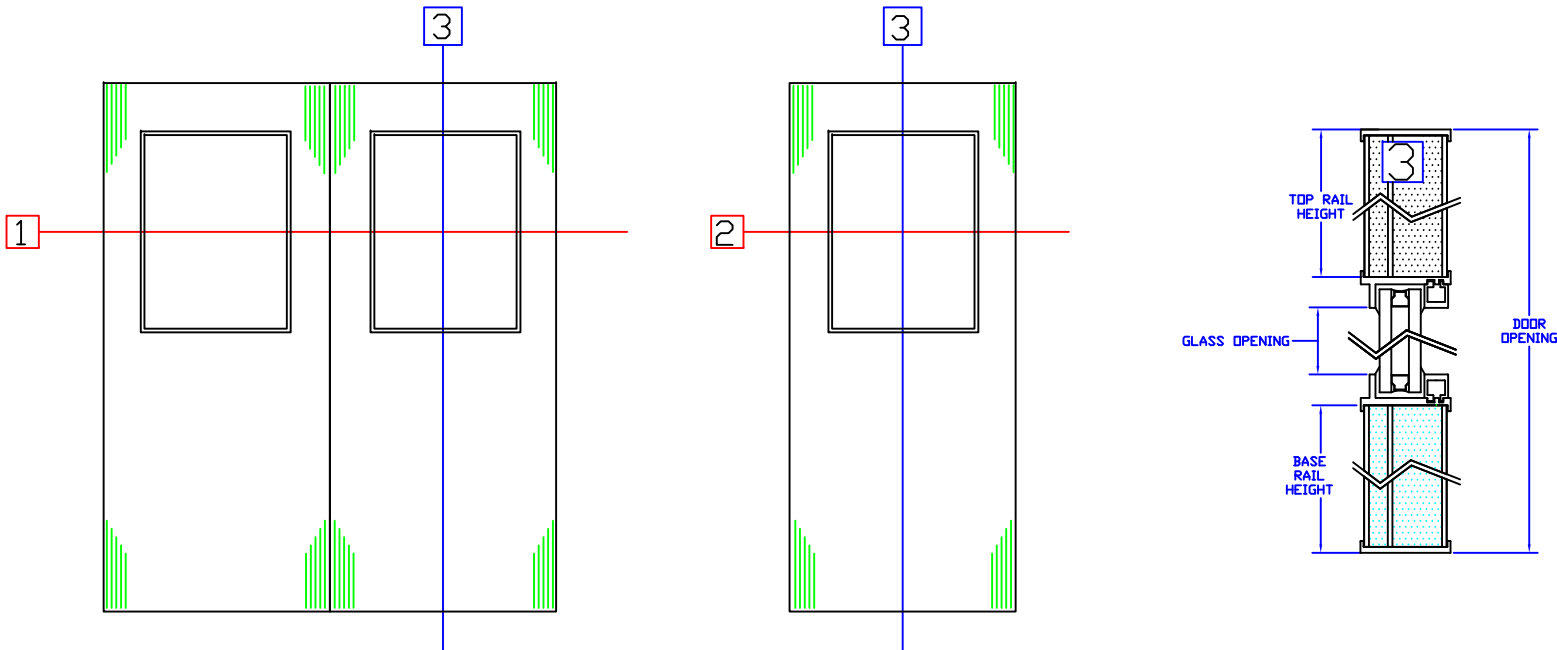
FLT-400-SG3

THERMALLY BROKEN AND
INSULATED DOOR SERIES



FLT-400-HG

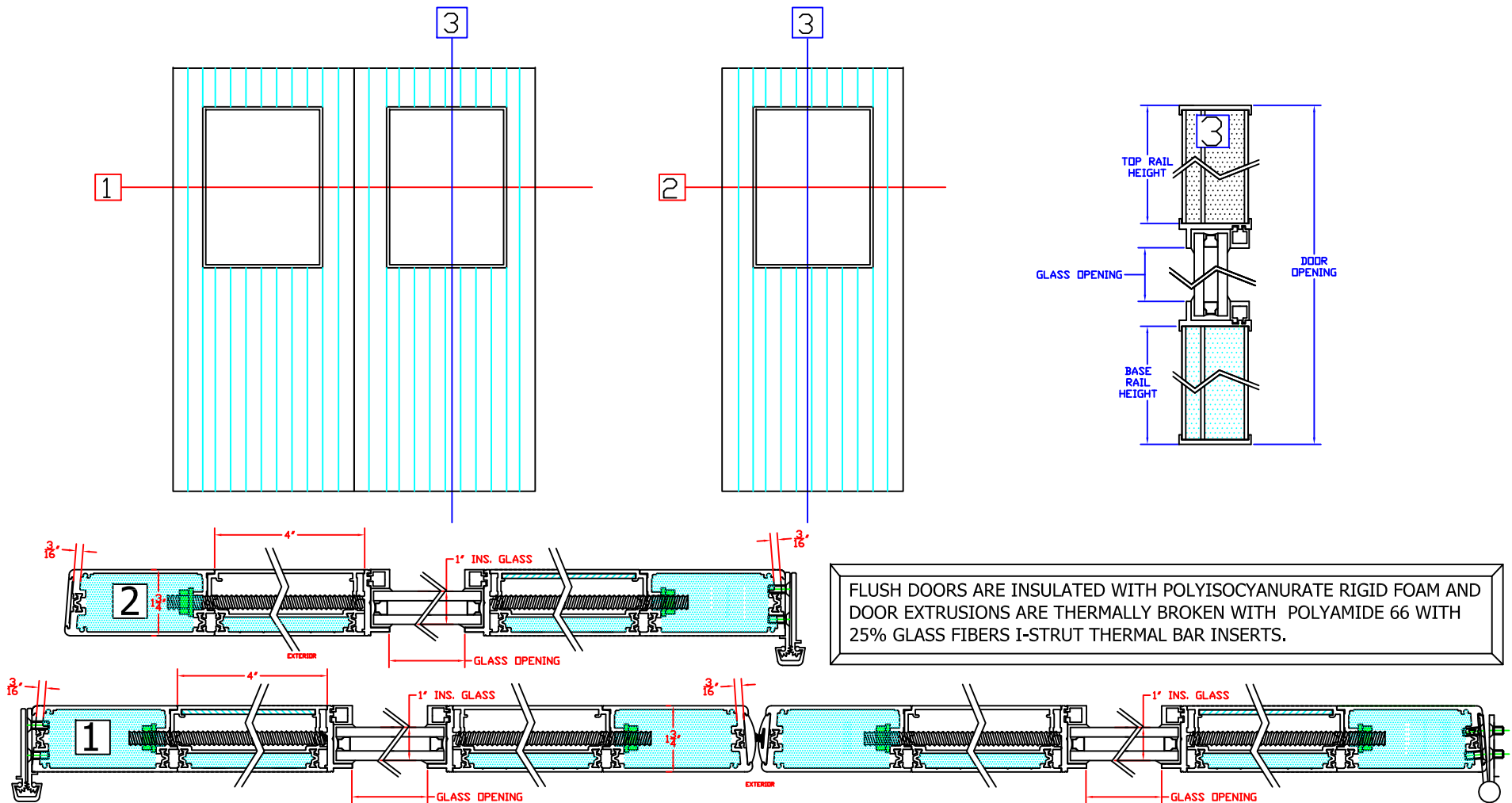
THERMALLY BROKEN AND
INSULATED DOOR SERIES



FLUSH DOORS ARE INSULATED WITH POLYISOCYANURATE RIGID FOAM AND DOOR EXTRUSIONS ARE THERMALLY BROKEN WITH POLYAMIDE 66 WITH 25% GLASS FIBERS I-STRUT THERMAL BAR INSERTS.

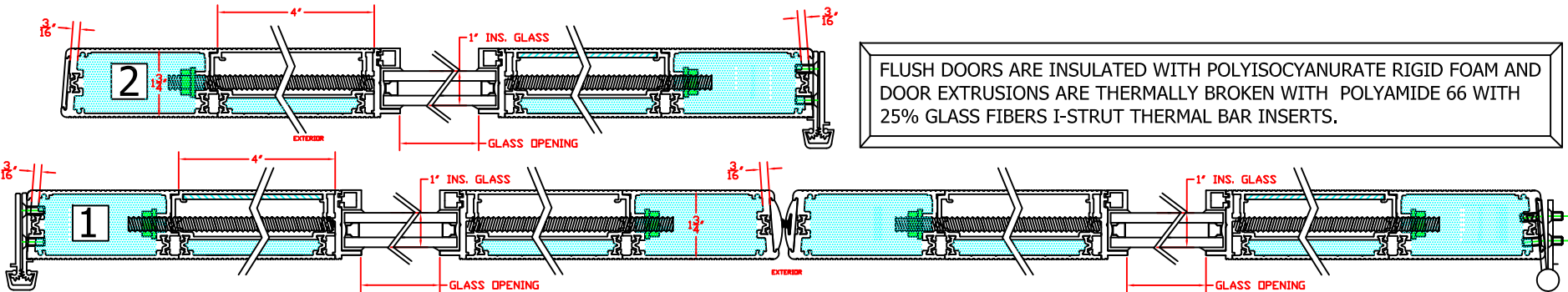
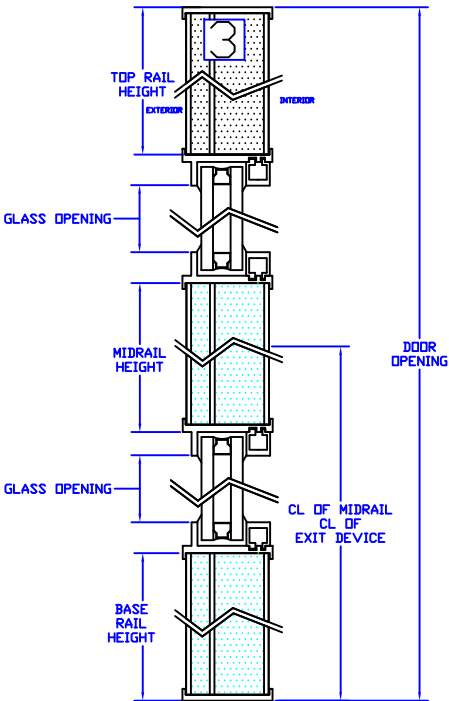
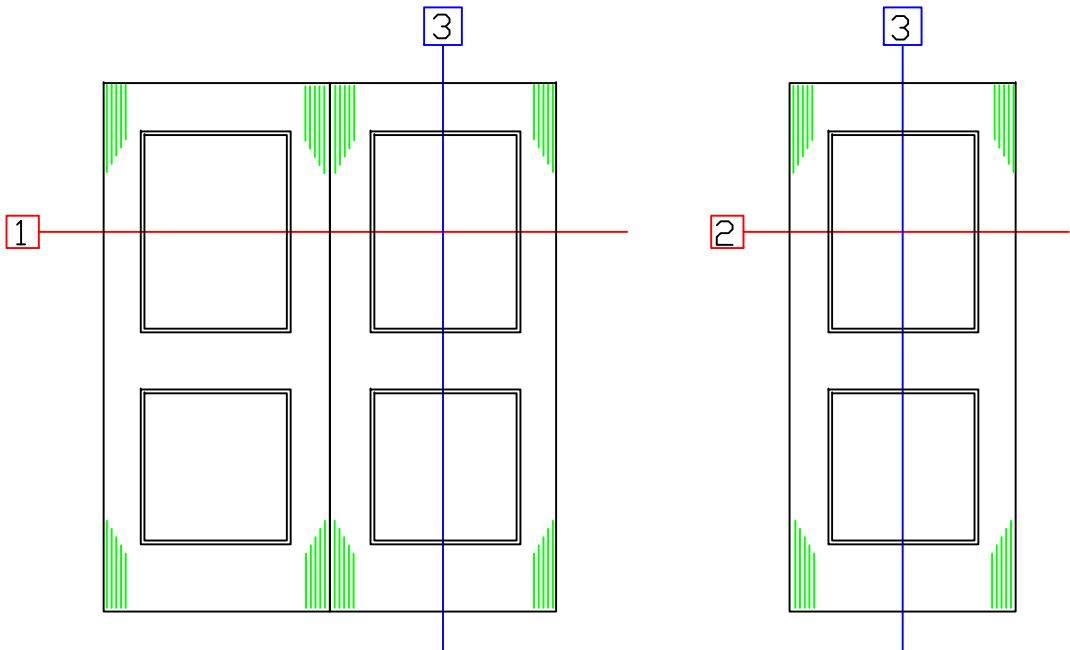
FLT-400-HG

THERMALLY BROKEN AND
INSULATED DOOR SERIES



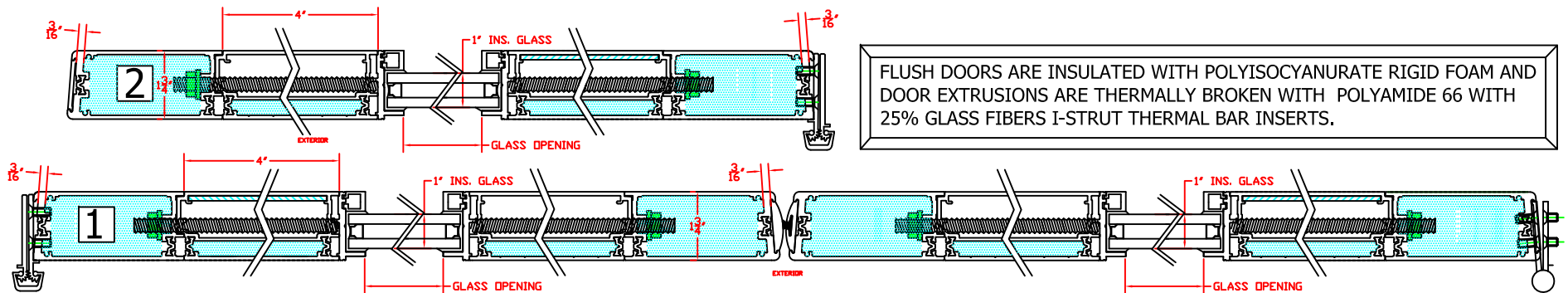
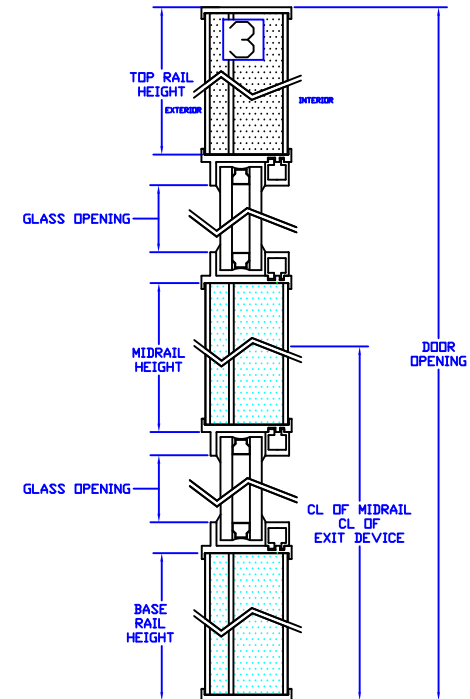
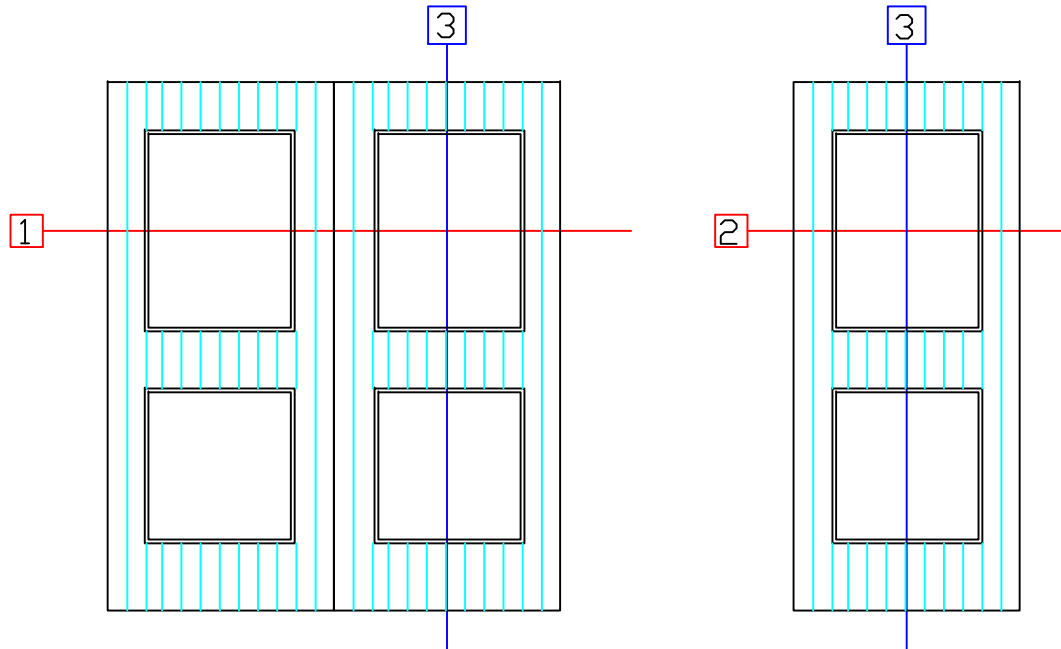
FLT-400-DG

THERMALLY BROKEN AND
INSULATED DOOR SERIES



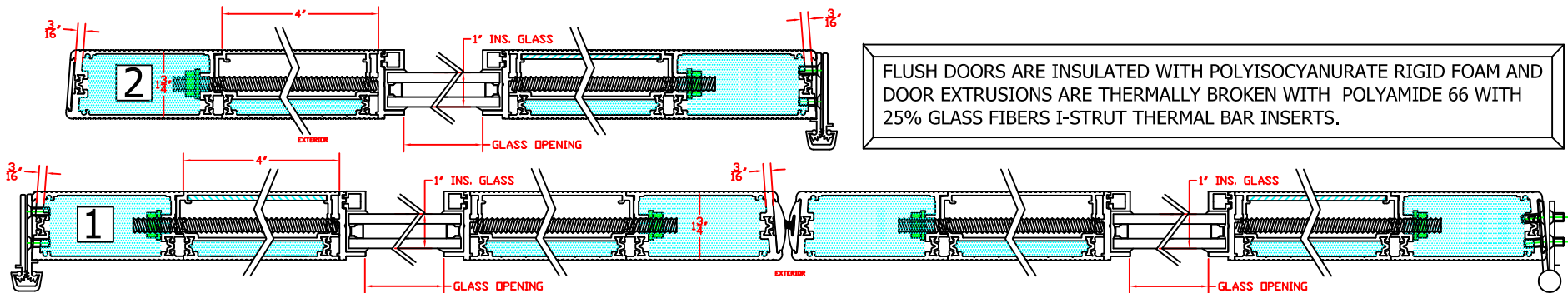
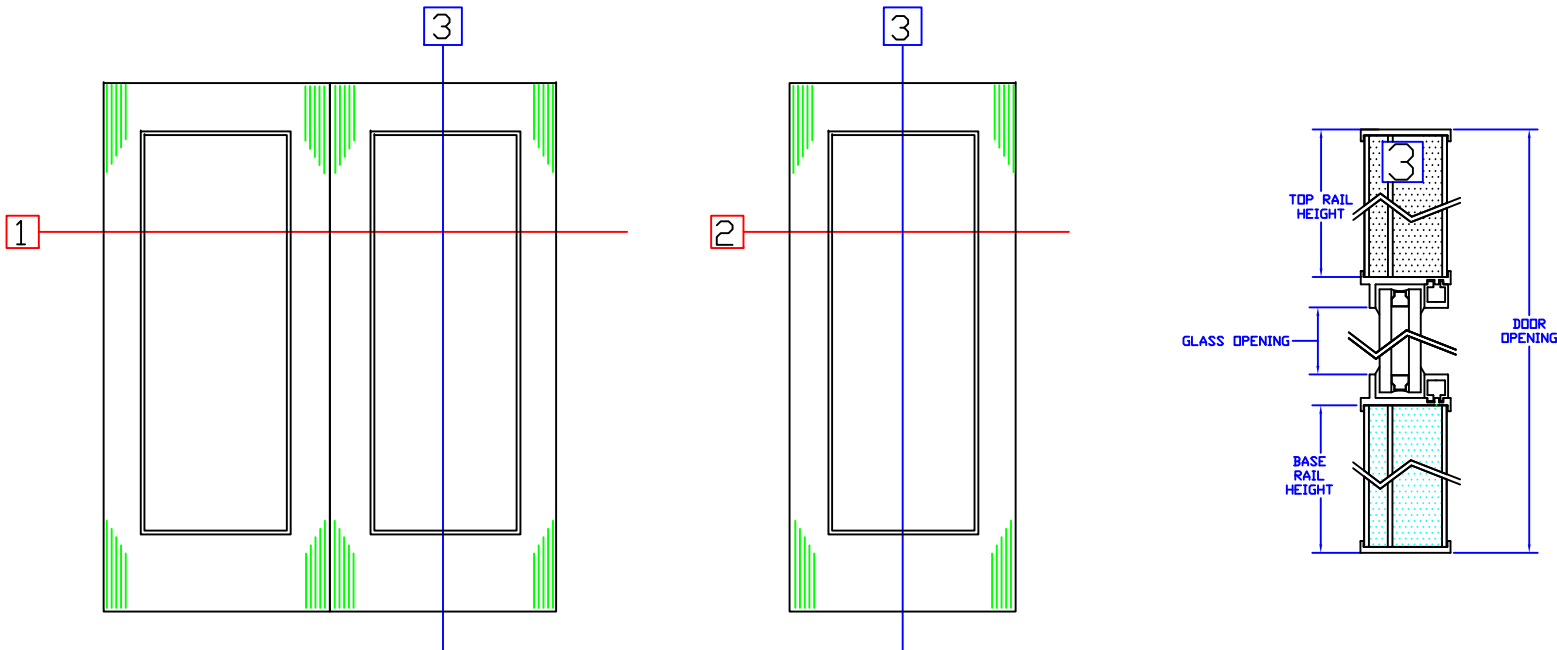
FLT-400-S-DG

THERMALLY BROKEN AND
INSULATED DOOR SERIES



FLT-400-FG

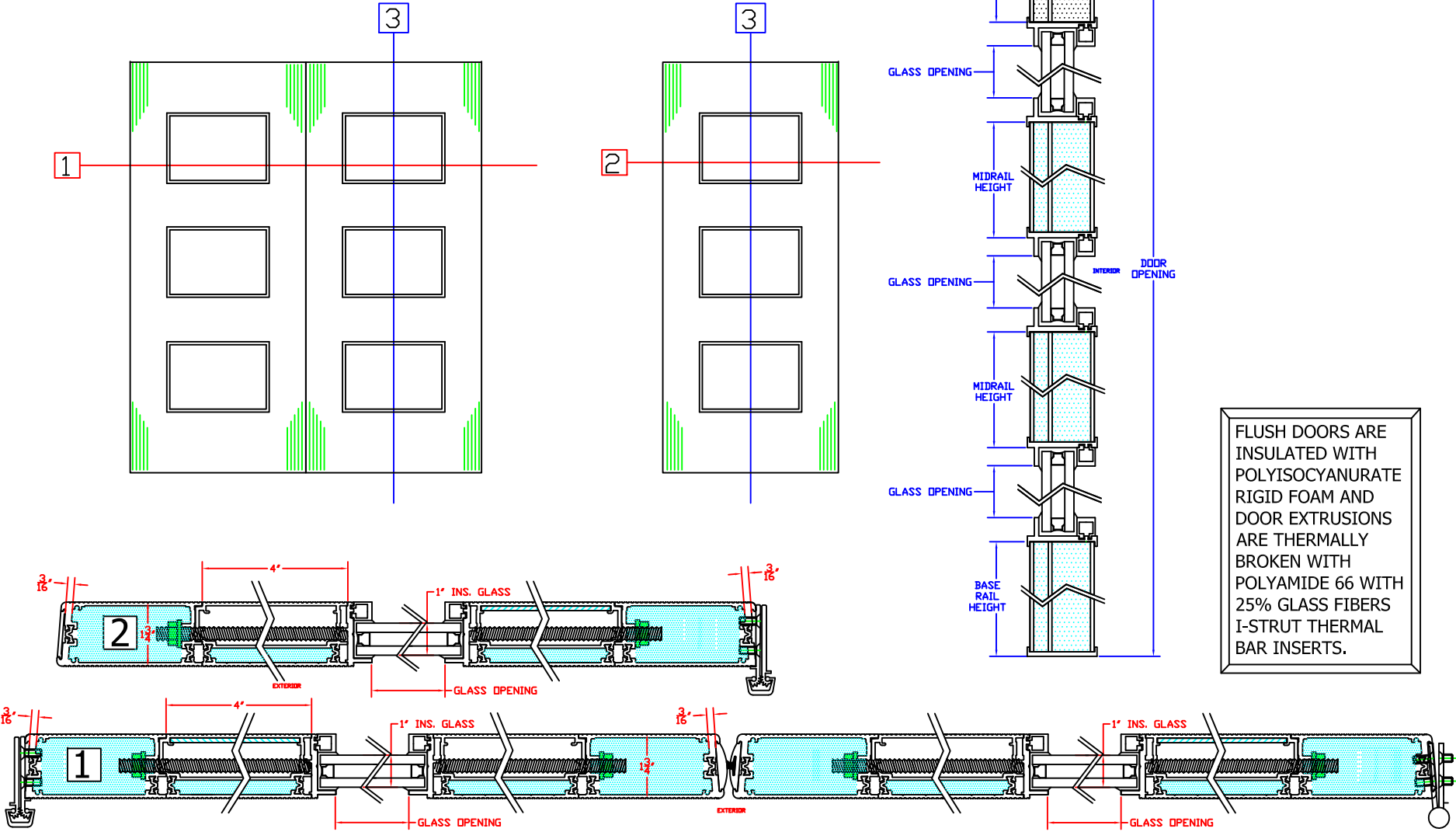
THERMALLY BROKEN AND
INSULATED DOOR SERIES



FLUSH DOORS ARE INSULATED WITH POLYISOCYANURATE RIGID FOAM AND DOOR EXTRUSIONS ARE THERMALLY BROKEN WITH POLYAMIDE 66 WITH 25% GLASS FIBERS I-STRUT THERMAL BAR INSERTS.

FLT-400-G3

THERMALLY BROKEN AND
INSULATED DOOR SERIES



FLUSH DOORS ARE
INSULATED WITH
POLYISOCYANURATE
RIGID FOAM AND
DOOR EXTRUSIONS
ARE THERMALLY
BROKEN WITH
POLYAMIDE 66 WITH
25% GLASS FIBERS
I-STRUT THERMAL
BAR INSERTS.